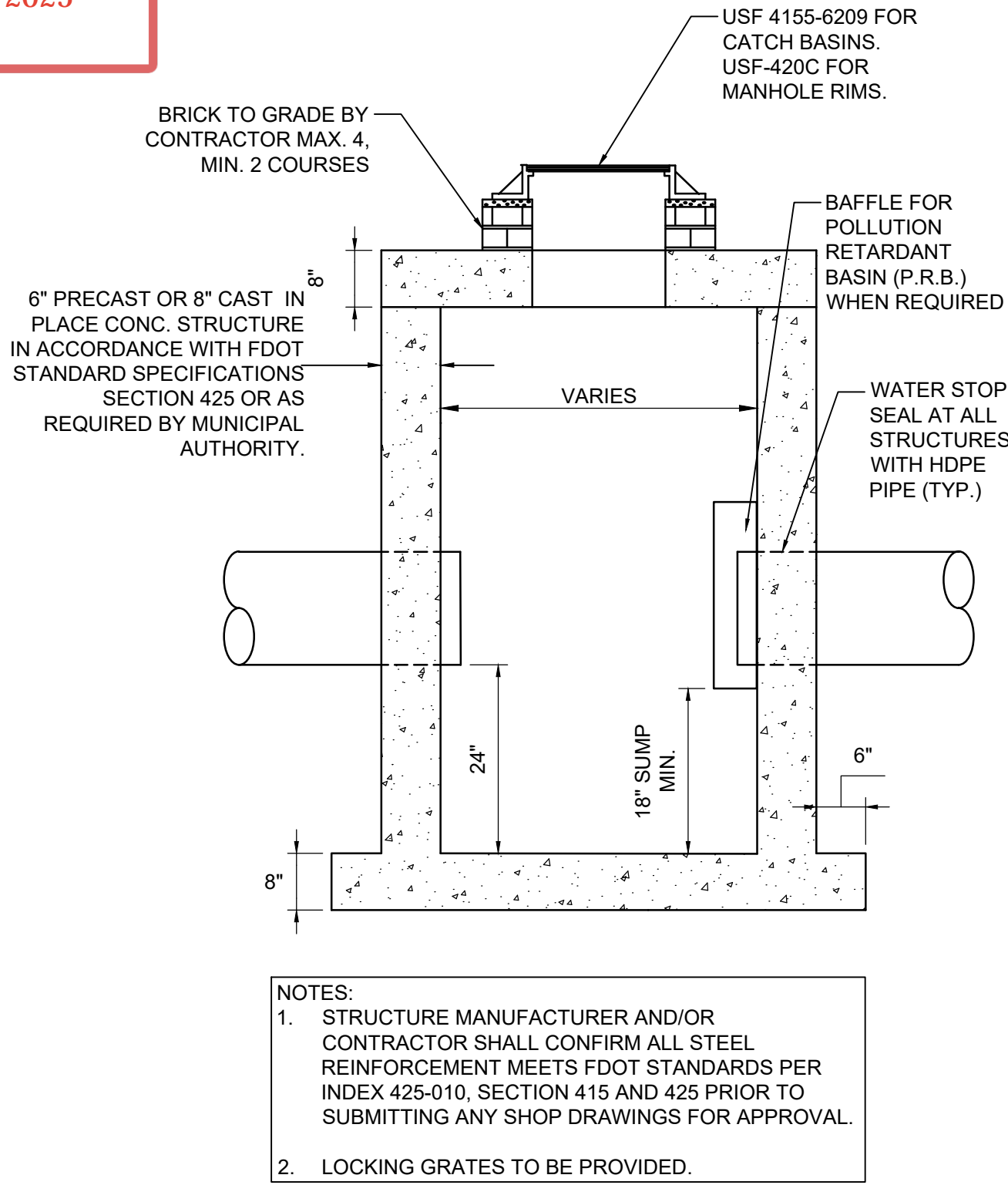


D

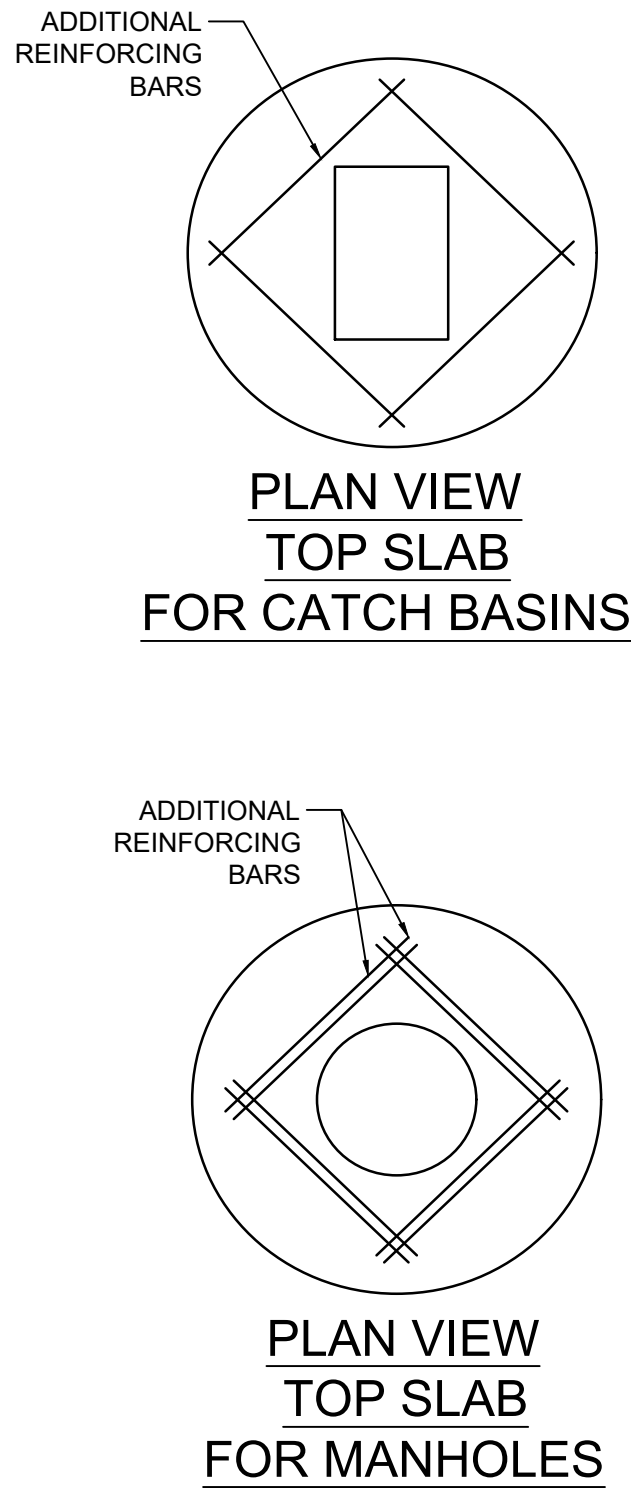
C



12 CATCH BASIN / DRAINAGE MANHOLE DETAIL NOT TO SCALE

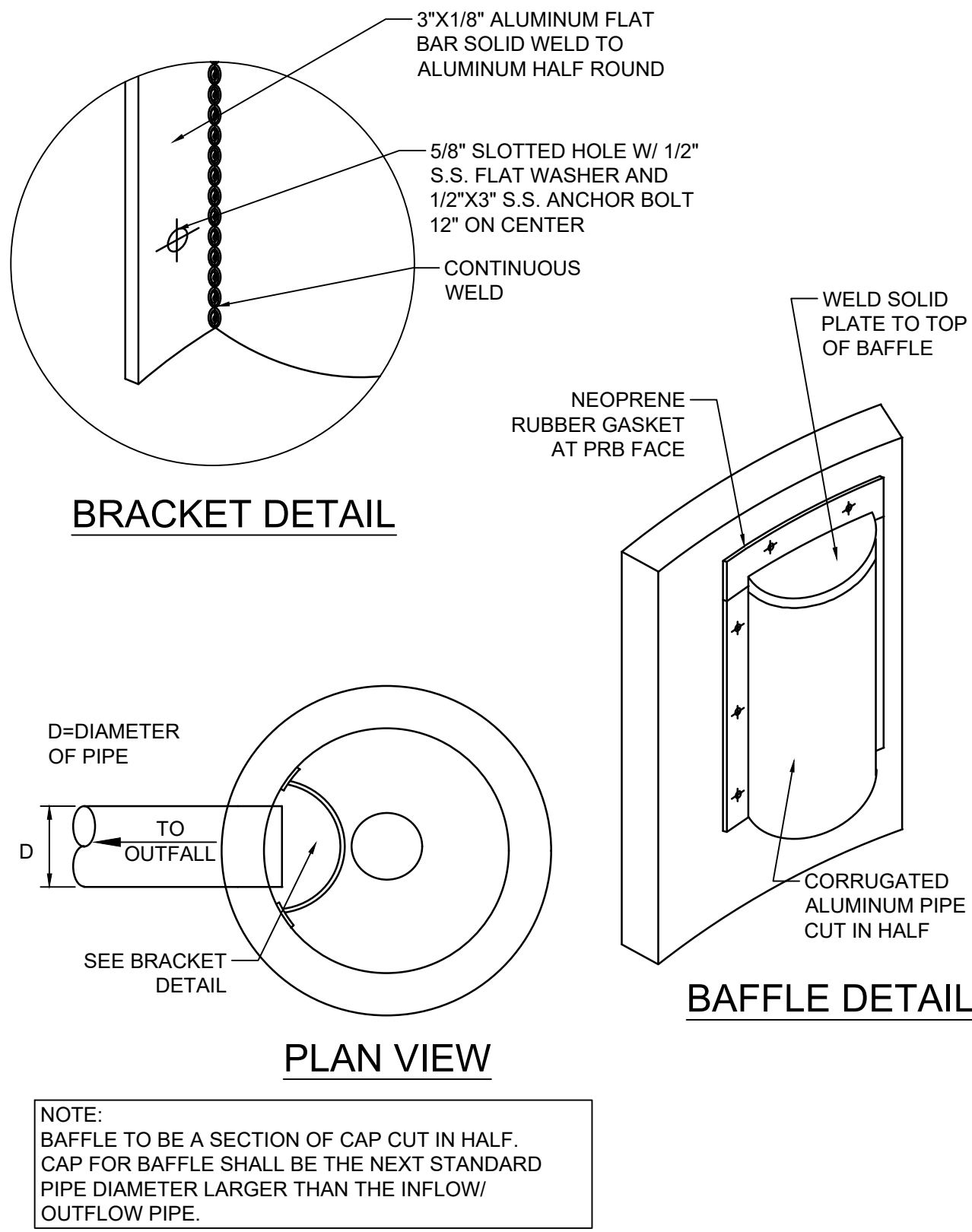
2

3



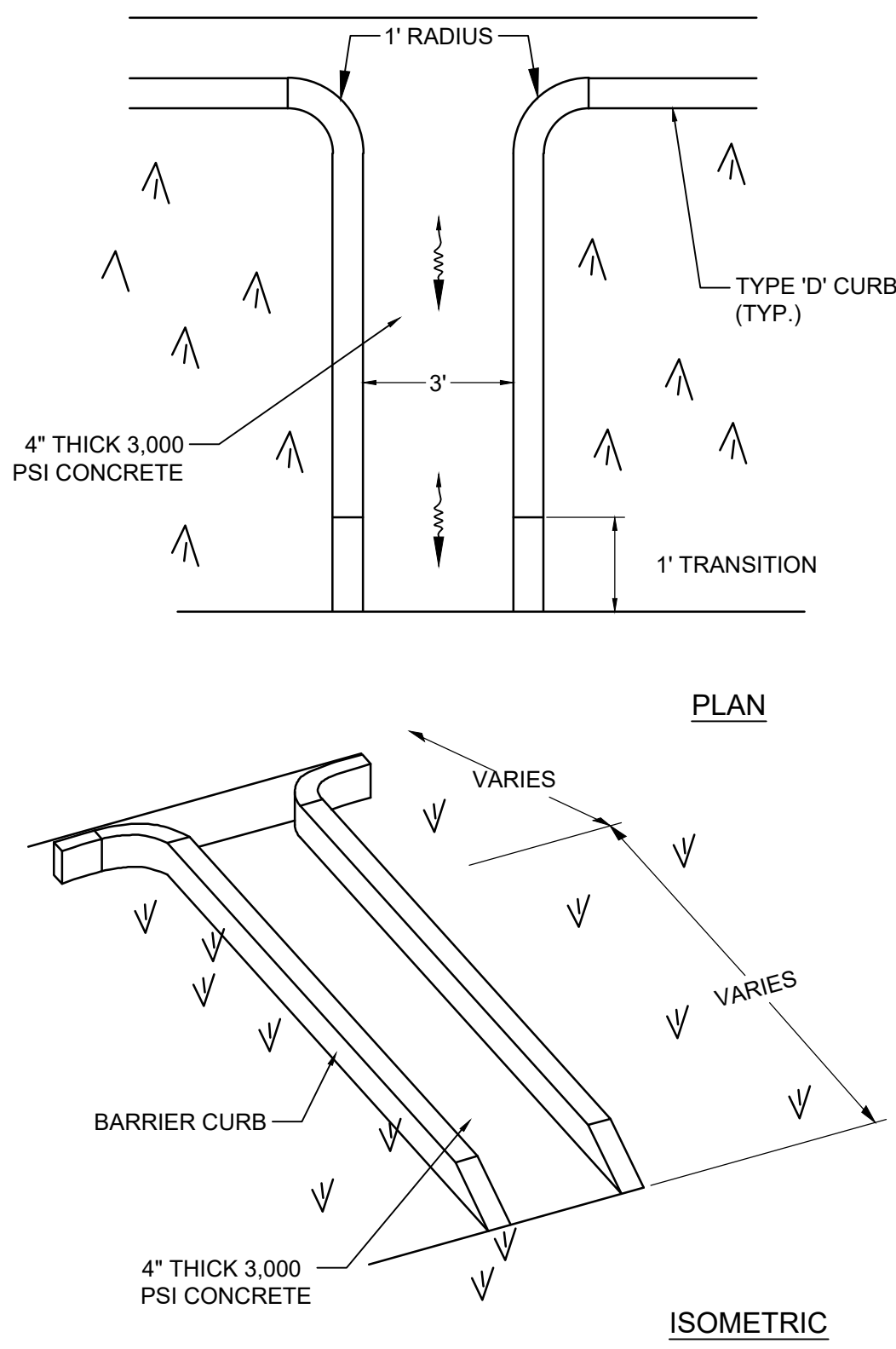
13 CATCH BASIN / MANHOLE FRAME DETAIL NOT TO SCALE

4



14 POLLUTION RETARDANT BAFFLE DETAIL NOT TO SCALE

5



15 CONCRETE FLUME DETAIL NOT TO SCALE

Florida Engineering Business License: CA7928
Florida Surveyor and Mapper Business License: LB6860
Florida Landscape Architecture Business License: LC26000457

REVISIONS		
NO.	DESCRIPTION	DATE

**PRELIMINARY PLAN
NOT FOR CONSTRUCTION**
THESE PLANS ARE NOT FULLY PERMITTED AND ARE SUBJECT TO REVISIONS MADE DURING THE PERMITTING PROCESS.
RESPONSIBILITY FOR THE USE OF THESE PLANS PRIOR TO OBTAINING PERMITS FROM ALL AGENCIES HAVING JURISDICTION OVER THE PROJECT WILL FALL SOLELY UPON THE USER.

ISSUE DATE:	11/12/2025
DESIGNED BY:	NW
DRAWN BY:	FA
CHECKED BY:	NW
BID-CONTRACT:	

NILES T. WARRICK, P.E.
FLORIDA REG. NO. 94320
(FOR THE FIRM)

CLIENT

JADIAN IOS

PROJECT

951 SW 12th AVENUE
POMPAÑO BEACH FL

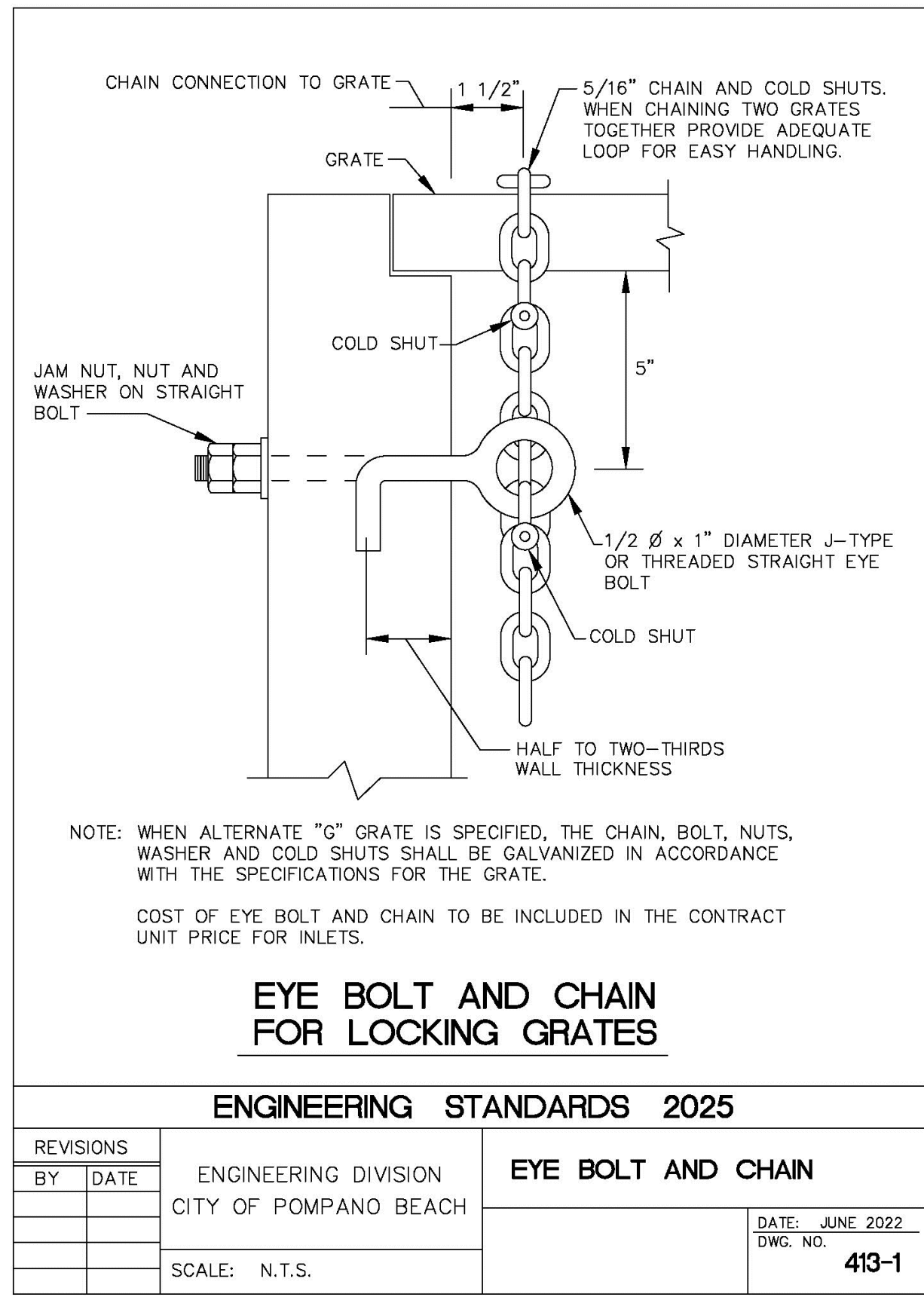
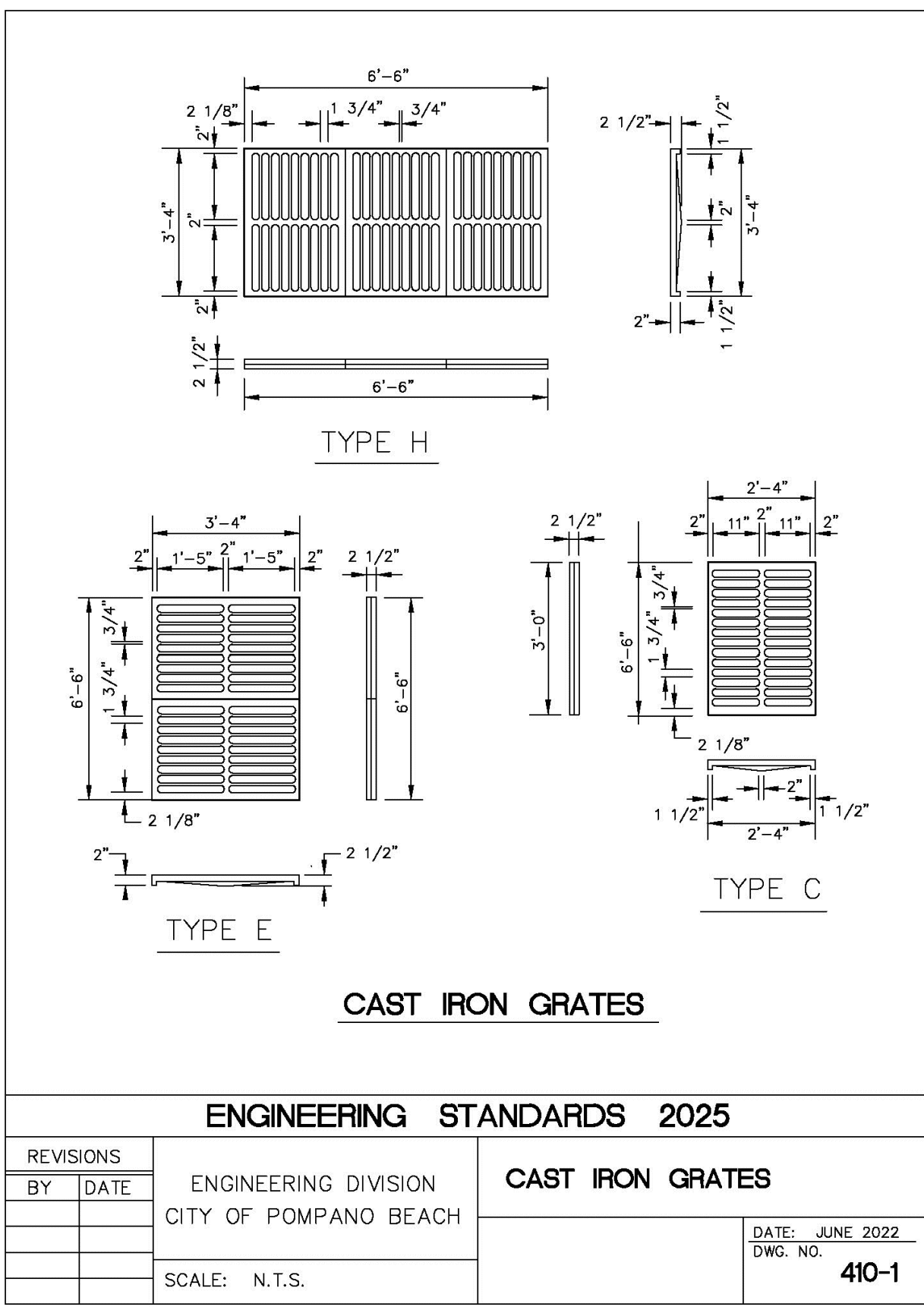
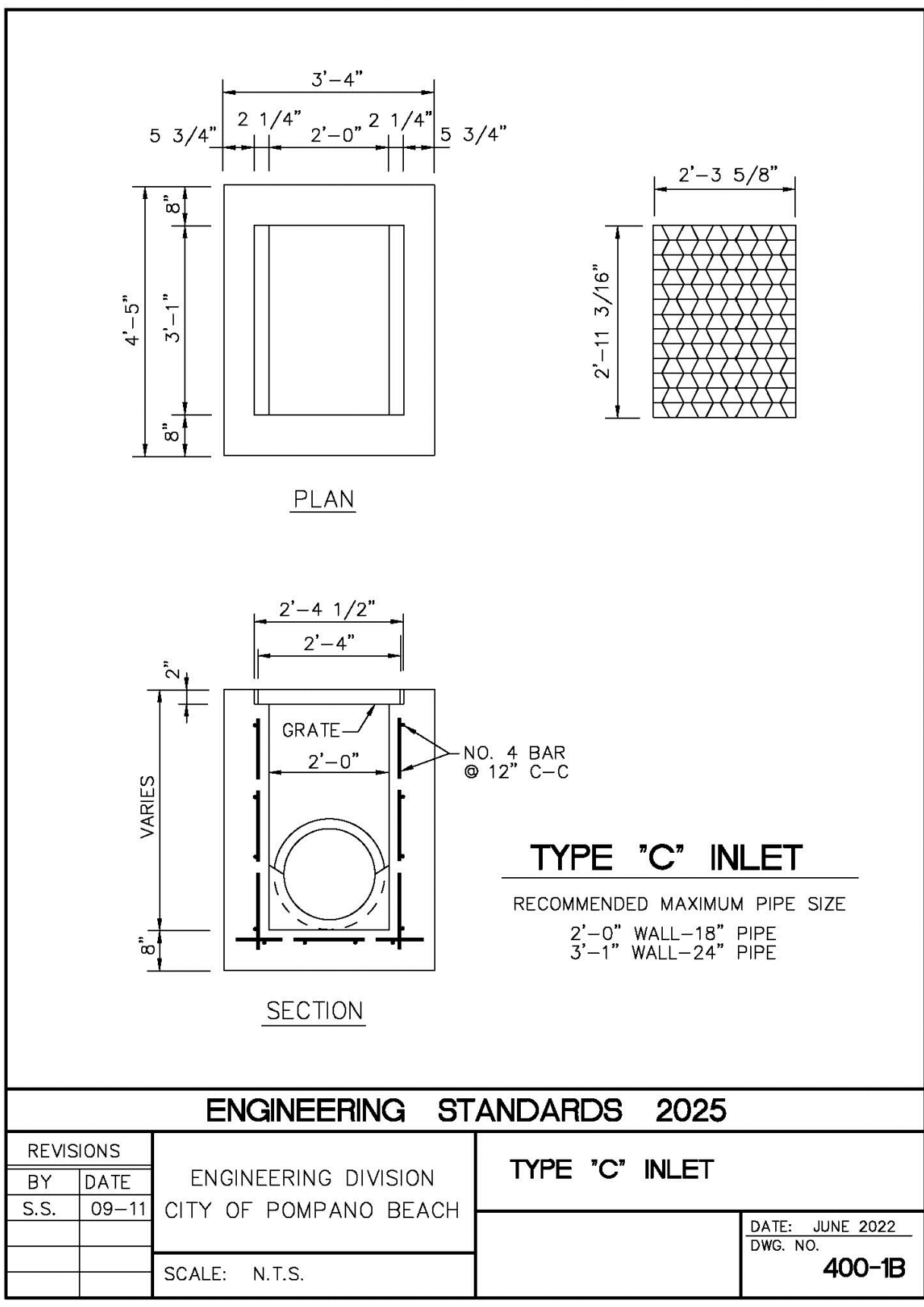
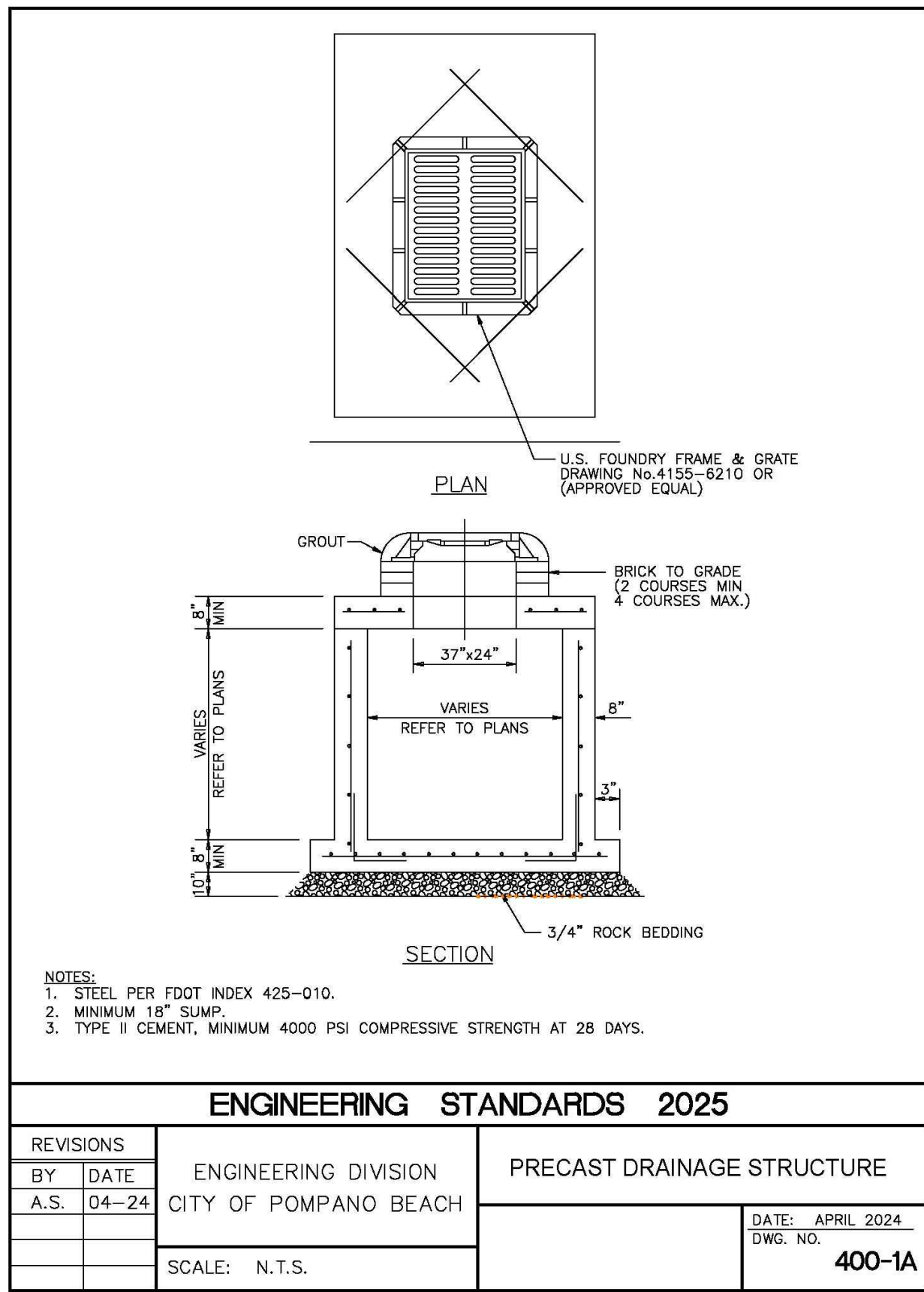
SHEET TITLE

PAVING, GRADING, AND
DRAINAGE DETAILS

SHEET NUMBER **CP-502**
PROJECT NUMBER **15427.00**

B

A



Drawing name: H:\15427.00 - 951 S Andrews Ave - Jadian IOS\Engineering\Cadd\15427.00-CP-502.dwg

STATUS: PRELIMINARY